



NRC 1158584, Pelham Pipeline Spill Pelham, Shelby County, Alabama

SITUATION REPORT #10

1800 CDT, September 19, 2016

INCIDENT SUMMARY

On September 9, 2016, at 1359 hours CDT, Colonial Pipeline Company (CPC) reported a gasoline spill from a 36" below ground pipeline to the National Response Center. The gasoline traveled overland for approximately 500 feet to a pond that feeds into Peel Creek (which is a tributary of the Cahaba River).

CPC initially reported to the responding OSC that between 1,000 and 2,000 gallons of gasoline entered the pond. The spill volume has since been updated to between 6,000 barrels [bbls] and 8,000 bbls (252,000 gallons – 336,000 gallons).

Alabama Department of Environmental Management (ADEM) and Environmental Protection Agency (EPA) are integrated into Unified Command and are coordinating with State and County Agencies. An Incident Command Post is being operated out of Hoover, Alabama.

PUBLIC AFFAIRS

PIO Pinkney and OSC Eichinger conducted multiple on- and off-camera interviews with various media outlets.

The Honorable Governor Robert J. Bentley, Governor of Alabama, and Lance R. LeFleur, Director of ADEM visited unified command for a briefing on the progress. The Governor hosted a press conference following the briefing.

INCIDENT MANAGEMENT AND STAFFING

OSC Kevin Eichinger remains integrated into Unified Command.

OSC Garrard integrated into Operations on September 14, 2016 and will demobilize September 20, 2016. OSC Franco will resume the EPA position within Operations.

OSC Tripp demobilized from the site today.

PIO James Pinkney coordinated information requests in the Joint Information Center (JIC)

OSCs, the United States Coast Guard (USCG) Gulf Strike Team (GST) and the Superfund Technical Assessment and Response Team (START) are embed in the Operations Sections.

START is embedded in the Environmental Unit.

EPA Public Affairs Specialist and a Public Information Officer are also assigned to the Joint Information Center (JIC).

Current number of EPA Personnel Assigned: 4

Current number of United States Coast Guard Gulf Strike Team (USCG GST) Members: 4

Current number START Personnel: 3

Total number of response Personnel: 670

CURRENT RELEASE AND RECOVERY ESTIMATES

Current Release Estimate – 6,000 bbl to 8,000 bbls

Recovery/Loss to the Environment Volumes:

Fuel/Waste Recovery	Volume Since Last SITREP	Total Volume to Date
Recovered from Pond #2	TBD	84,614 gallons ¹
Loss to the Environment due to Evaporation	0 gallons	276,265 gallons
Bound in the Soil	TBD	TBD
Petroleum Contact Water		278,082 gallons
Petroleum Contaminated Soil		40 tons

Notes:

¹ Operations reduced product recovery estimates by 1,362 gallons. CPC implemented a more accurate way of tracking recovered product by measuring product thickness in the storage tank after allowing it to settle for 3-hours. Product measurements will be recorded once per day, in the morning. Product recovery activities were minimal during this operational period.

CURRENT OPERATIONS

1) Product Recovery and Removal

- The Incident Command Post relocated to Ross Bridge in Hoover, Alabama.
- Crews continues to evaluate plugging the culvert between Pond 2 and Pond 3. OSC Garrard oversaw and provided support as a diver entered Pond 3 to locate the culvert (see photo below). The diver identified the culvert at the narrow point between Pond 2 and 3, approximately 10.5 feet below the water surface. The culvert has an opening of approximately 6-feet by 3-feet joining the two ponds.
- The Planning Section in conjunction with Operations are working to develop a plan to address the culvert. Two options are being considered; (1) sealing the culvert or (2) installing an air sparge gate. UC will provide comments on the plan after completion and the selected method will be implement Friday, September 23, 2016.
- A fuel/water mixture continues to drain out of the leak site to Pond 2. This mixture is mostly water; however, a rock outcrop located approximately 15 feet northeast of the leak site is currently discharging product. Crews deployed containment booms where this drainage ditch enters Pond 2 (2a recovery site) to catch the product prior to entering Pond 2.
- Operations deployed containment boom yesterday evening to corral the majority of the product remaining in Pond 2. Visual observations indicate product on Pond 2 covers

approximately one third of the pond and thickness to be approximately 1-inch, where it pooled. There are four storage tanks at staging 2b, to contain recovered product in that area.

- Operations recovered minimal product during this operational period from the northeastern portion of Pond 2 at recovery point 2b (area of pooled product). Vacuum trucks from 2b transferred recovered product to four storage tanks at staging 2b.
- Pipeline draining activities continued at stopple 2.
- Operations continued installation of an additional underflow dam in Peel Creek, approximately 200 feet southeast of the Cahaba River. It should be complete during the next operational period.
- START coordinated with UC to set up a mobile viewer application. The viewer is linked directly to planning within the situation unit to receive real-time updates.

2) Environmental Sampling and Impacts

a. Air Monitoring

- Work interruptions due to excessive benzene and LEL readings were minimal during this operational period. Today's VOC's peaked at 630 parts per million (ppm) at stopple 2; benzene peaked at 4.1 ppm at the right of way; and LEL peaked at 23% at stopple 2.
- One START member continued to conduct oversight of air monitoring activities.

b. Surface Water

- One START member continued to collect split surface water samples with CPC. START obtained split samples from Pond 2, Pond 3, Peel Creek, and the confluence of Cahaba River and Peel Creek. Preliminary sample results continue to indicate that there are no impacts to Peel Creek and the Cahaba River from the pipeline release.
- There is no sheen observed on Pond 3; however, sample results continue to indicate that there is dissolved benzene, toluene and xylene (components of gasoline) migrating from Pond 2.

c. Wildlife Impacts

- The CPC environmental consultant is responsible for identifying and documenting impacted wildlife. During this operation period, teams did not identify any additional impacts to wildlife.
- To date, seven mammals including a rabbit, two raccoons, one fox, one coyote, one otter, and one armadillo have been impacted; four reptiles (turtle) have been impacted; and two birds including a hen wood duck and a white bird have been impacted. The white bird remains in a restricted area and teams have not been able to collect it; however, it is assumed to be an egret.

3) Health and Safety Oversight

- United States Coast Guard Gulf Strike Team Members continue to provide health and safety oversight of both day and night operations.
- The Federal Aviation Administration (FAA) continues to maintain an aviation floor restriction of 2,500 feet in a 3-mile radius around the work site. OSC Garrard coordinated with FAA to obtain a five-day extension which expires on September 24, 2016. Helicopters and drone activity were causing hazardous conditions for the workers. The helicopters were

pushing the gasoline vapors into the staging areas and into work zones. The drones were flying low over the gasoline on the pond and were a potential ignition source.

4) Restoration of Services

- Rather than send the pig through from Stopple 2 to Stopple 1 and evacuate product from the entire section of pipe and risk discharging additional product to Pond 2, operations intends to drain product in the vicinity of the by-pass tie-in points. The subsurface pipe roughly follows topography and the tie-in points are located in dips. Operations utilized vacuum trucks to remove fuel in these sections so tie-in points could be installed safely. OSC Garrard and Operations will continue to evaluate potential options for controlling source material at the leak site prior to discharging to Pond 2.
- As mentioned above, CPC continues to implement the plan to install an approximate 500-foot section of pipe to by-pass the leak site. This plan was developed with the input of Pipeline and Hazardous Materials Safety Agency (PHMSA). Once installed, the pipeline can resume service.

5) Remediation Planning

- Plans continue to be developed and will be reviewed by UC when ready.
- The environmental unit completed an assessment of livestock access and potential use of the Cahaba River for crop irrigation. The assessment did not identify any livestock or irrigation access points along the Cahaba River in the vicinity of the confluence of Peel Creek and the Cahaba River.
- Planning has developed a hydrogeological assessment plan (ground water monitoring). Plan will be circulated during the next operational period for review by Unified Command.

6) Emergency Fuel Waiver

- On September 14, 2016, EPA issued a [waiver](#) for federal low volatility requirement of 7.8 psi under the Clean Air Act for certain markets in the southeast in an effort to further mitigate potential supply disruptions. The high ozone season ends at 11:59, September 15, 2016, and this waiver allowed the use of gasoline above 7.8 psi in TN and GA before that period.
- On September 16, 2016, EPA issued a [second waiver](#) to allow for reformulated and conventional gasoline (commingling) to be sold in markets that may be impacted by the disruption in supply caused by the disruption in service to Colonial Pipeline Line 1.

PLANNED RESPONSE ACTIVITIES

The following activities are planned during the next operation period:

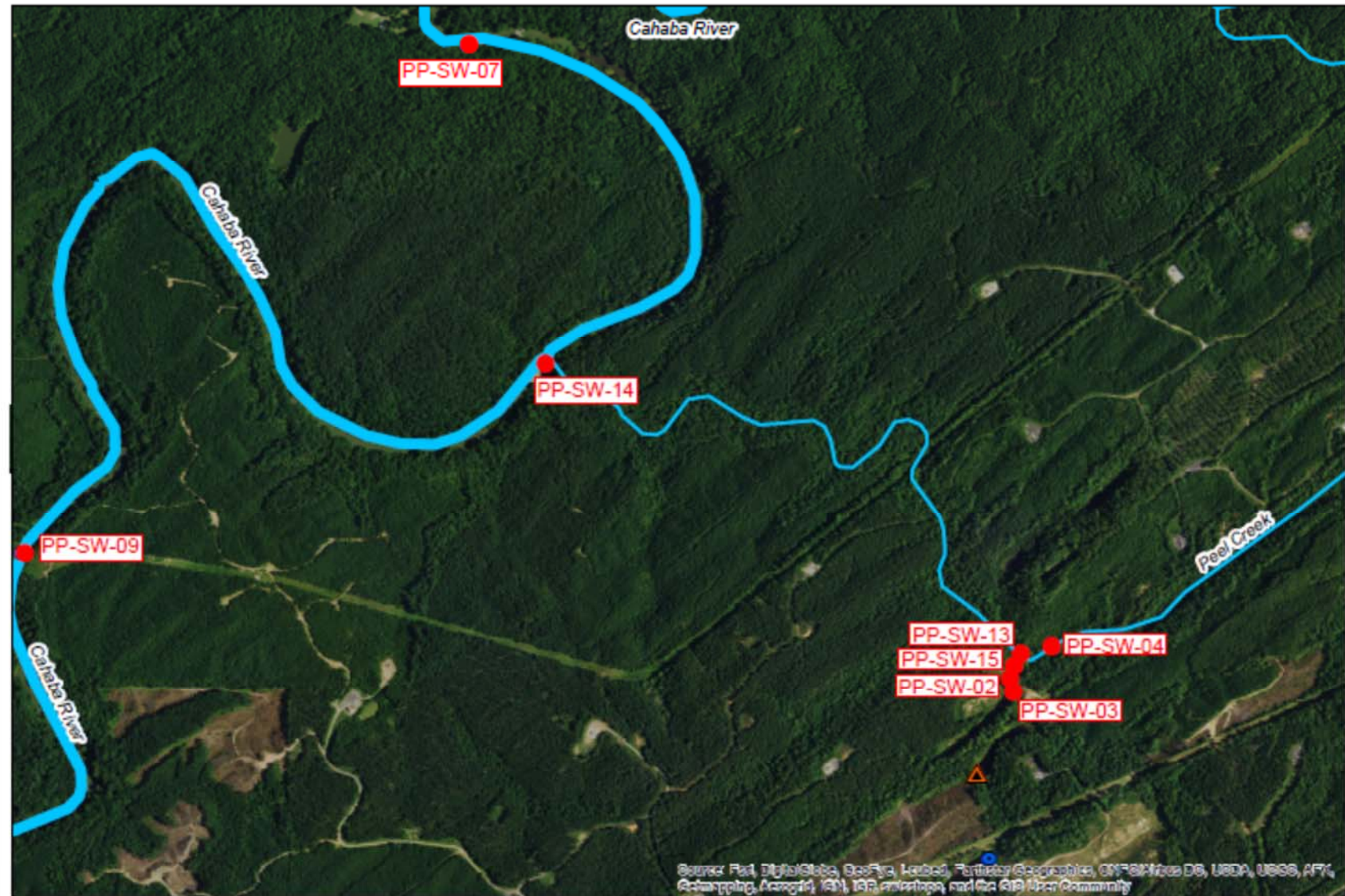
- Continue to participate in UC
- Monitor removal activities
- START will discontinue split surface water sampling and will demobilize after this operational period.
- START will discontinue oversight of air monitoring efforts and will demobilize after this operational period.

- Participate in the Joint Information Center.
- Prepare for and coordinate a transition to a removal phase.
- Operations will pre-stage oil containment booms on the Cahaba River.
- Complete installation of the additional underflow dam near the confluence of Peel Creek and the Cahaba River.
- Complete pipeline bypass and restore service.
- Continue recovery of fuel from Pond 2.
- Continue removal of fuel from the plugged pipeline.
- Identify secondary location for soil staging.

SITUATIONAL REFERENCE MATERIAL



Diver in Pond #3 locating the underwater culvert.

[illegible]

Sources: Fast DigitalStats, GeoEye, Landsat, Panhandle Geographics, ON-FMARS DB, USDA, USGS, AFM, Reconnaissance, AerialGrid, IGN, ICR, and others, and the GIS User Community