

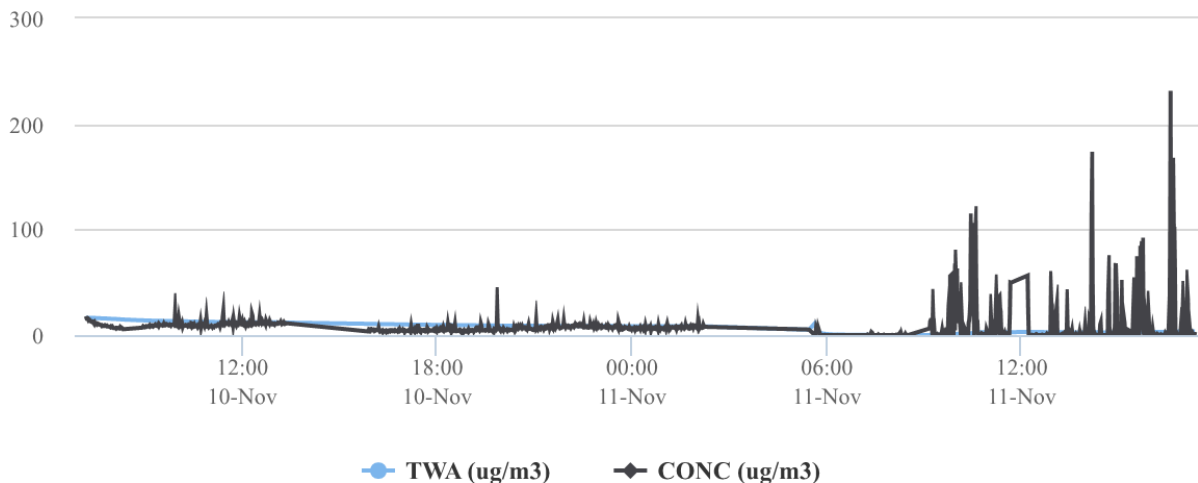


Bethlehem Steel (Steel Works) Fire Response Particulate Data

DataRAM 4000 particulate monitors were deployed by USEPA Environmental Response Team (ERT) and SERAS/Leidos contractor support teams at 5 locations. This data was available for real-time viewing on a secure EPA website throughout the response. The USEPA ERT locations supplemented other particulate data collection performed by EPA Region 2 and other assisting agencies. DataRAM 4 units monitored for Total Particulates and reported in micrograms per cubic meter (ug/m3). Note that each strip chart/graph below shows data in an auto-scaled format, which allows for easier viewing of data peaks. A “Linc” is a telemetry device which assigns a specific ID to each DataRAM’s dataset. Periods when telemetry systems failed to report are listed in the discussions below.

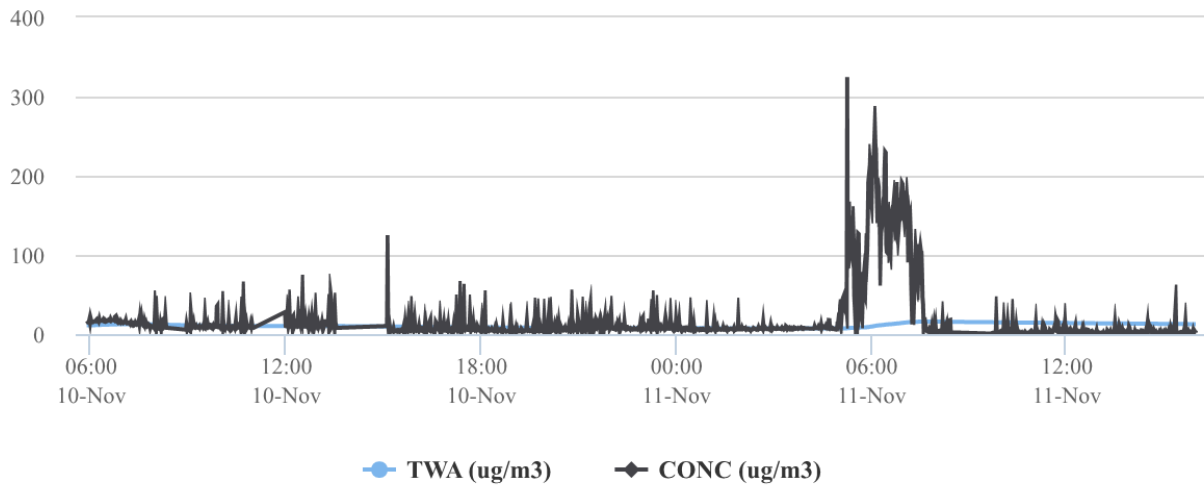
The DataRAM attached to Linc 73 was located at AS012 (Guard Shack). Missing data time periods include 13:20 – 15:52 on 11/10/16, 2:14 – 5:26 and 11:39 – 12:10 on 11/11/16.

(.73) DataRAM 4000



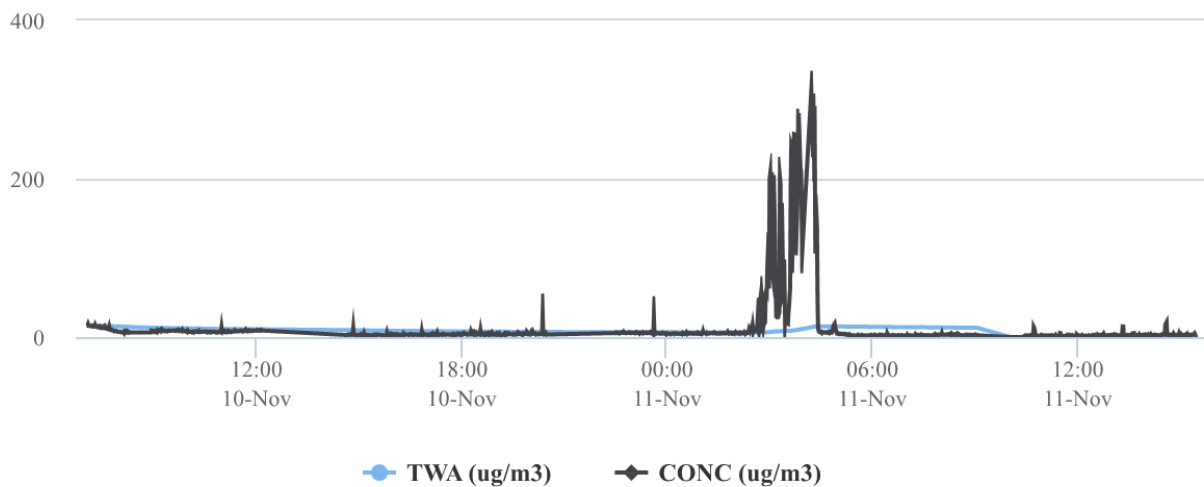
The DataRAM attached to Linc 68 was located at AS009 (Mirriam Ave and Electric Ave). Missing data time periods include 10:59 – 11:56 and 13:32 – 15:05 on 11/10/16, 8:25 – 9:40 on 11/11/16.

(.68) DataRAM 4000



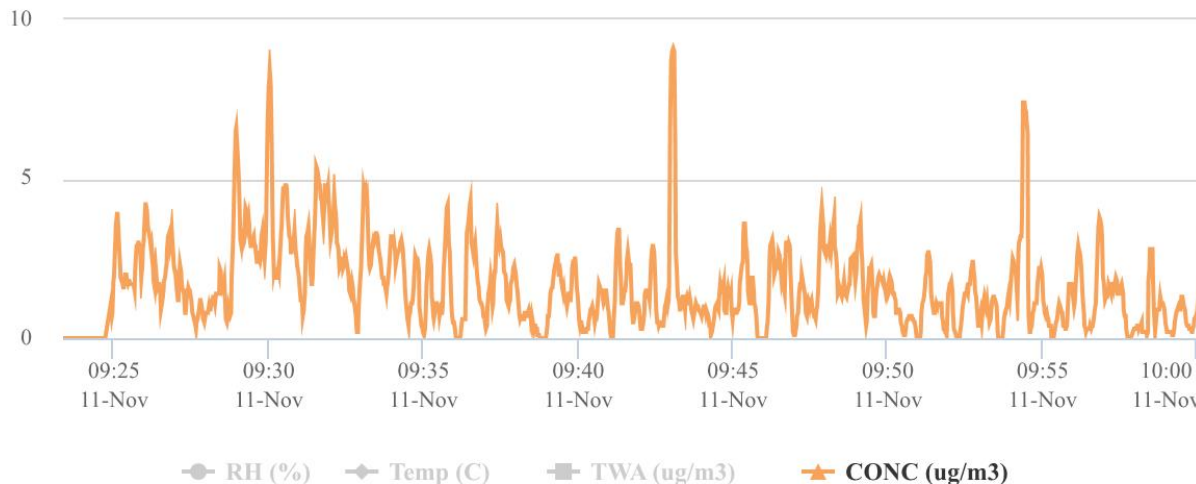
The DataRAM attached to Linc 90 was located at AS010 (Van Wyck Ball Fields). Missing data time periods include 12:08 – 14:39 and 20:28-22:25 on 11/10/16, 9:03-10:03 on 11/11/16.

(.90) DataRAM 4000



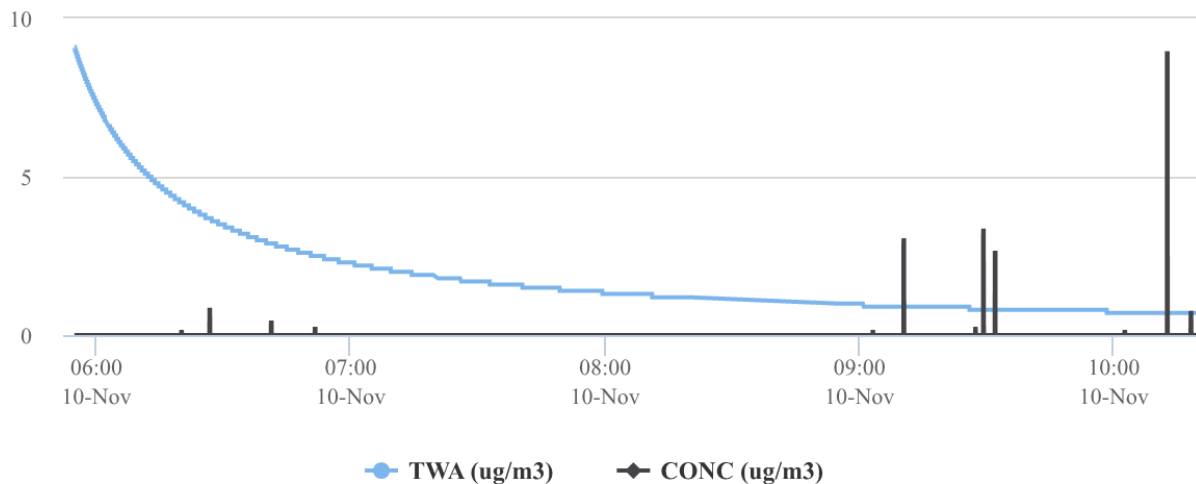
The DataRAM attached to Linc 119 was located at AS017 (Milestrip Expy and Electric Ave). Instrument and communications were inhibited during the event. The following graph depicts a valid data period.

(.119) DataRAM 4000



The DataRAM attached to Linc 107 was initially located at AS004 (Frontier High School) from 5:51 until 10:19 on 11/10/16. The following graph depicts the monitoring results from the High School. Missing data time periods include 8:19 – 8:54 on 11/10/16.

(.107) DataRAM 4000



The DataRAM attached to Linc 107 was moved to the AB Courts location and initialized at 10:37 on 11/10/16. The following graph depicts the monitoring results from the AB Courts location. Missing data time periods include 12:36 – 16:27 and 17:46 – 19:40 on 11/10/16.

(.107) DataRAM 4000

