

New Mexico Wildfires Report #19

August 26, 2022

INCIDENT OVERVIEW

- Due to wildfires throughout the State, including a number over 1,000 acres, the State of New Mexico made a Disaster Declaration on May 3, 2022. The President subsequently approved a federal disaster declaration on May 4, 2022, to provide federal funding to State and eligible local governments and certain private nonprofit organizations. The declaration covers the counties of Colfax, Lincoln, Mora, San Miguel, and Valencia.

EXECUTIVE SUMMARY

- On August 6, 2022, EPA received an increase ceiling for the ESF-10 DFA MA to bring the ceiling to \$3,165,294.20, with the projected end date of September 27, 2022, with a state cost share of 25%.
- On August 15, 2022, EPA received an increase ceiling for the ESF-3 FOS MA to bring the ceiling to \$90,000 with the projected end date of August 25, 2022, with a state cost share of 0%.

SIGNIFICANT ACTIONS

- EPA is projecting to complete Phase 1 Collections on September 6, 2022, to allot for transportation and disposal of all accumulated wastes, demobilization of all resources, and project closeout documentation in meeting MA Completion Date of September 27, 2022. Some trailing costs are anticipated beyond the MA Completion Date, including but not limited to, the production of a final report and invoices. These costs will be covered under the current MA.
- Delivery of the Pretreatment Plant (PREWTP) has been completed. It is expected to be operational by August 26, 2022. The PREWTP has the capacity to treat 1.5 million of gallons per day (MGD) over a 24-hour period. Based on previous estimates, the city has treatable raw water from the Bradner Reservoir until September 18, 2022.
- FEMA continues to deliver bottled water. FEMA plans to deliver 10 truckloads per week to Las Vegas, New Mexico. The city distributes the bottled water every Wednesday from the Montoya Recreation Center. The ESF-3 MA ended on August 25, 2022.

COORDINATION WITH STATE AND OTHER PARTNERING AGENCIES

- EPA continues to coordinate transition of HHW and bulk asbestos for collection and disposal to USACE by September 27, 2022.

EPA RESOURCES

EPA Resources (As of August 25, 2022)					
Agency	Remote IMT	REOC	JFO (virtual)	IMT	TOTAL
EPA	4	13	1	3	21
NMED	1	0	0	0	1
START	2	0	0	6	8
ERRS	2	0	0	7	9
Total	9	13	1	16	39

OPERATIONS

HHW and Bulk Asbestos Task Force (ESF-10)

On August 25, 2022, the EPA Collections Task Force completed Phase 1's at 9 properties in Mora County and 4 properties in San Miguel County. Safety continues to be an issue with increased rain and flooding. FEMA will make determination on eligibility of properties and review Flood-related ROEs submitted on a case-by-case basis.

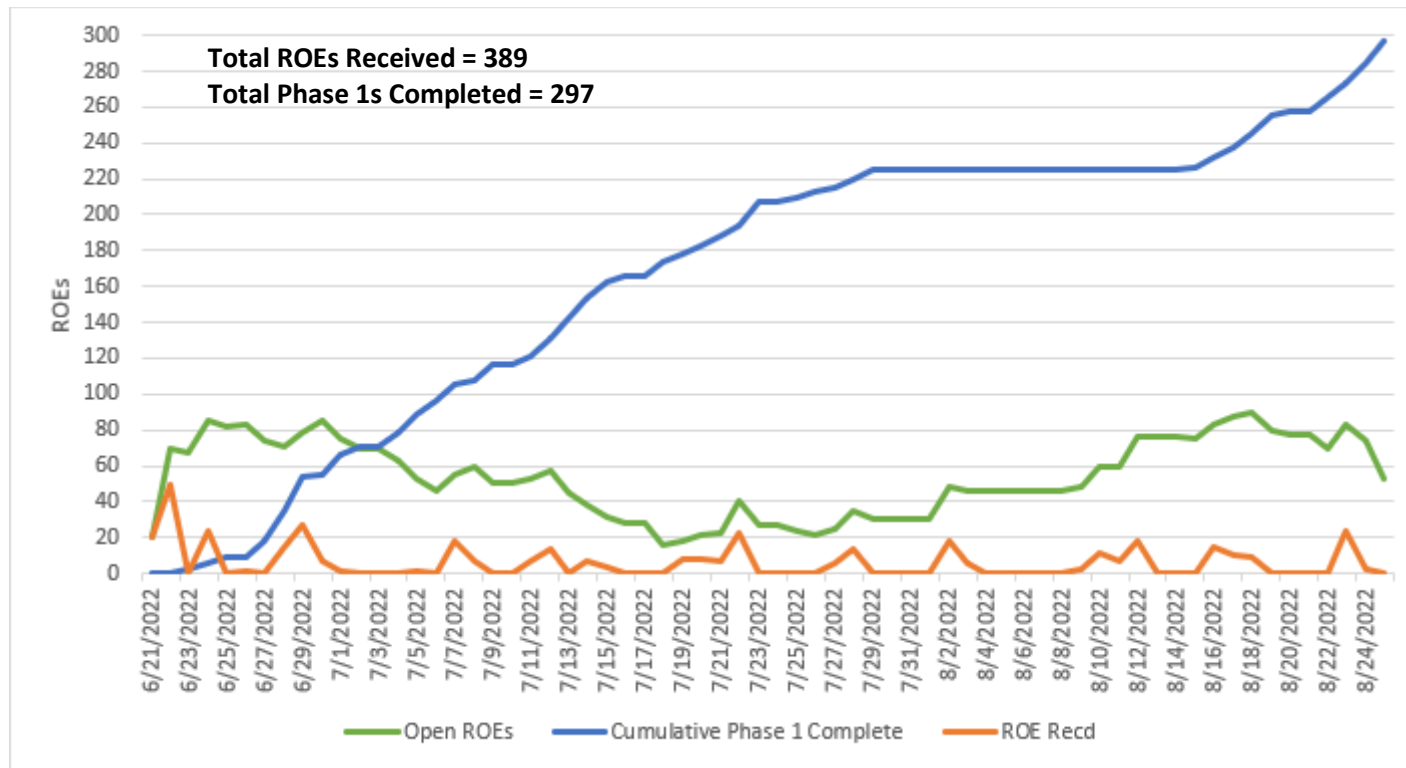
As of COB August 25, 2022, in addition to EPA's ROE forms received, FEMA provided a list of 37 Housing Priority Target addresses to EPA. The addresses are prioritized for Phase 1 to enable FEMA Direct Housing Assistance to be expedited for those property owners. As of August 25, 2022, EPA has completed Phase 1's on 13 properties of the Housing Priority Targets. EPA has ROEs for an additional two of the Housing Priority Targets. The remaining 21 properties listed for Housing Priority Targets do not have signed ROE forms. FEMA and USACE continue to reach out to the priority target owners for obtaining signed ROE forms.

Drinking Water Task Force (ESF-3)

Delivery of the Pretreatment Plant (PREWTP) has been completed. It is expected to be operational by August 26, 2022. The PREWTP has the capacity to treat 1.5 MGD over a 24-hour period. Based on previous estimates, the city has treatable raw water from the Bradner Reservoir until September 18, 2022.

FEMA continues to deliver bottled water. FEMA plans to deliver 10 truckloads per week to Las Vegas, New Mexico. The city distributes the bottled water every Wednesday from the Montoya Recreation Center. The ESF-3 MA ended on August 25, 2022.

<i>PROGRESS METRICS FOR 2022 NEW MEXICO WILDFIRE HHW COLLECTION</i>						
Current ROE Status	Mora		San Miguel		Total	
	August 25	Total	August 25	Total	August 25	All
ROE Received	0	136	0	253	0	389
ROE Withdrawn and Opt Outs	7	7	9	9	9	16
ROE Ineligible*	3	3	12	12	15	15
Unable to Access	3	3	5	5	8	8
Phase 1 Complete	9	95	4	202	13	297
Remaining ROEs	---	28	---	25	---	53



MAP 1 – AREAS OF OPERATIONS MAP

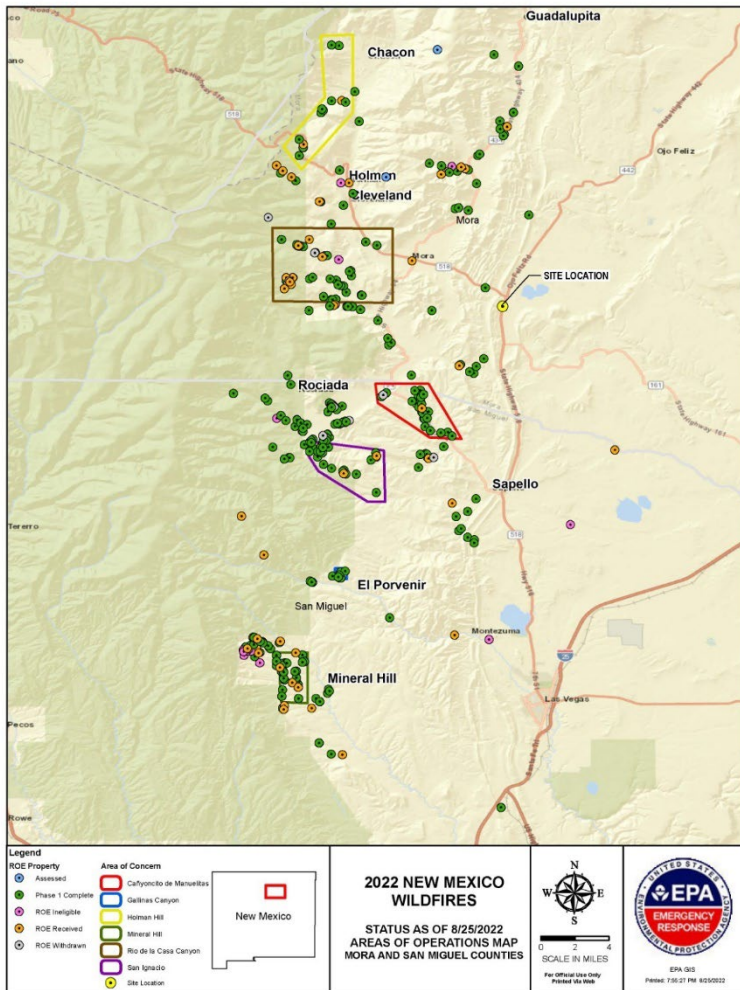


Figure 1: ROE Complete Table

PICTURES



Picture 1: Impacted Property – August 24, 2022.



Picture 2: Impacted Property – August 24, 2022.



Picture 3: Impacted Property – August 22, 2022.