

COVID-19 Response: ATSDR field and EOC deployments

Chris Poulet

Elizabeth Irvin-Barnwell

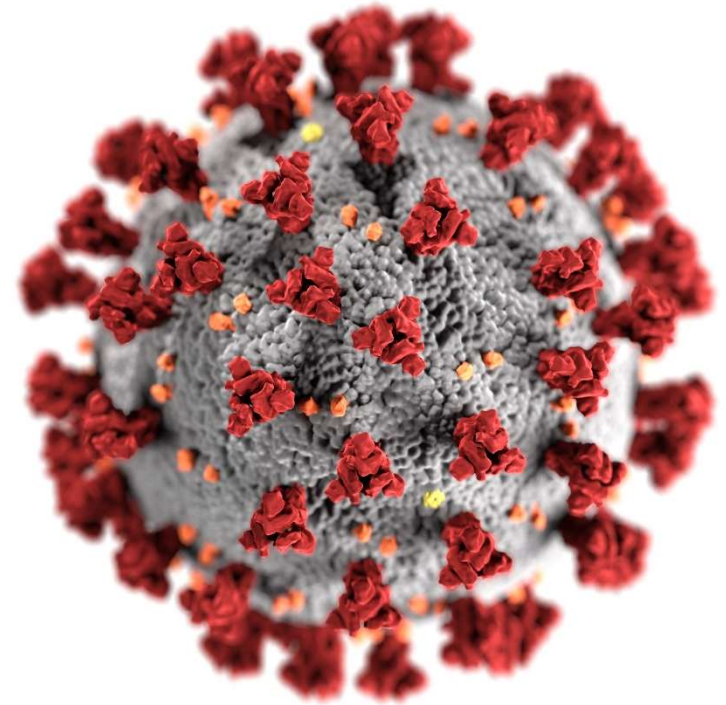
Kai Elgethun

Kelsey Benson

Scott Sudweeks

Regional Response Team Meeting: Region 8

October 15, 2020



cdc.gov/coronavirus

COVID-19 Field Deployments

Elizabeth Irvin, PhD

Director, Office of Community Health and Hazard Assessment



JFK Quarantine Station



www.cdc.gov



GLOBAL HEALTH ALERT: COVID-19

You may have been exposed to COVID-19 while traveling. Watch your health for symptoms. Even with no symptoms, you can spread the virus to others.

PROTECT OTHERS FROM GETTING SICK:



Keep 6 ft/2 m apart from others.



Wear a mask.



Wash your hands often.

Close contact activities put you at risk for exposure to COVID-19.

If you think you may have been exposed while you traveled, take extra care for 14 days after travel:

- Stay home as much as possible.
- Avoid being around people, especially those at higher risk for severe illness from COVID-19.
- Consider getting tested for COVID-19.



For more information: www.cdc.gov/COVIDtravel

www.cdc.gov



Health Department Task Force – Field Deployment

- Deployed to South Carolina Department of Health and Environmental Control
- Assisted with contact tracing methodologies, disproportionately affected populations outreach, health education and communication



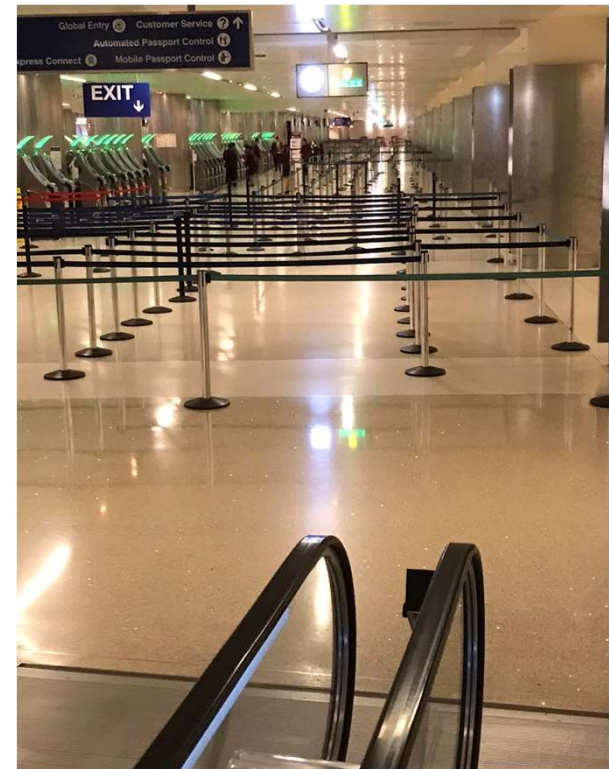
COVID-19 Field Deployments

Kai Elgethun, PhD, MPH

Region 8 Director, Office of Community Health and Hazard Assessment

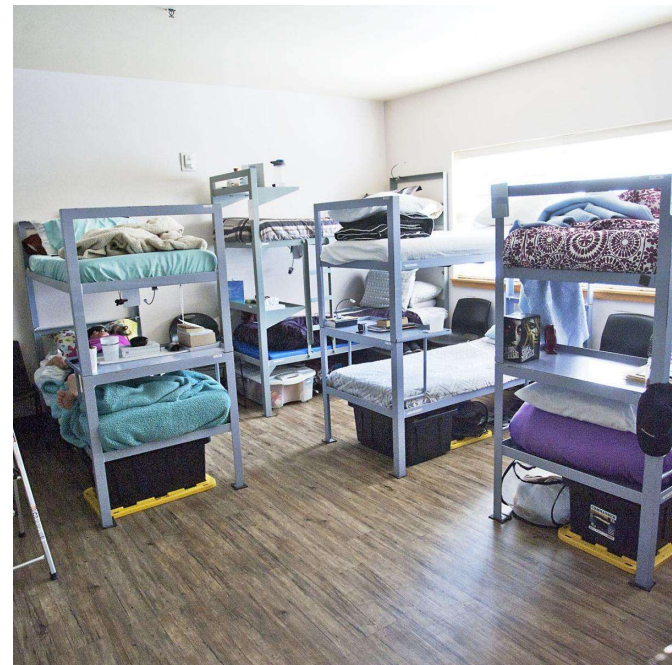


LAX Quarantine Station



Health Department Task Force – Field Deployment

- Deployed to Central District Health Department, Boise, ID
- Contact tracing for work release inmates in the State Prison System
- Intervention, screening and isolation strategies



COVID-19 EOC Deployment

Kelsey Benson, MPH

Epidemiologist, Office of Community Health and Hazard Assessment



EOC Deployment: Health Department Liaison

- Deployed to EOC to the State Tribal Local and Territorial Support Section, Health Department Task Force as a Health Department Liaison
- Role of the liaison:
 - Serves as the state/local/tribal/territorial primary COVID-19 CDC Point of Contact (POC) for their assigned states
 - Supports jurisdictional needs, coordinates technical assistance, disseminates critical information and enhances situational awareness
 - Maintains situational awareness on the topics of Task Forces
 - Works with jurisdictions and the Task Force Liaison Officers to escalate inquiries



EOC Deployment: Health Department Liaison

- Region 6: LA, TX, OK, NM, AR
- Assisted DOH and field teams deployed to
 - Bureau of Prisons (BOP) facility in Forrest City, Arkansas
 - Multiple correctional facilities in Louisiana
 - New Mexico to assist NM DOH with healthcare providers specifically in acute care and long-term care settings
 - Texas for a meatpacking outbreak
- Coordinated with counterparts at ASPR/FEMA



EOC Deployment: Health Department Task Force – Team Lead Regions 5-7

- Provide managerial oversight of regional operational activities including process guidance for advancing on-site assistance requests
- Assist with MMWRs
- White House calls with the state concerning supply chain issues
- Most common deployment requests for meatpacking, long term care facilities, correctional facilities deployment teams



COVID-19 Field Deployment

Scott Sudweeks

Region 8 Toxicologist, Office of Community Health and Hazard Assessment





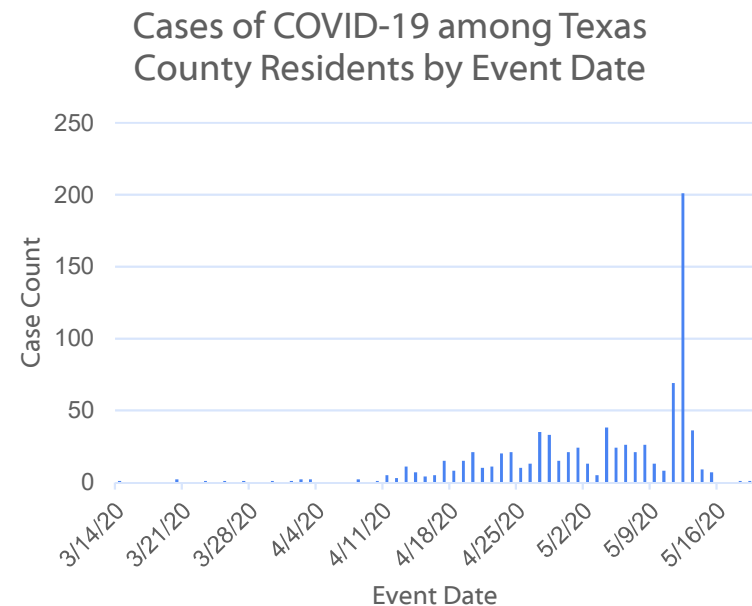
COVID-19 Field Deployments

- CDC liaison to FEMA and ASPR Region 8 – Denver, CO
- COVID-19 outbreak at meat processing facility in Oklahoma



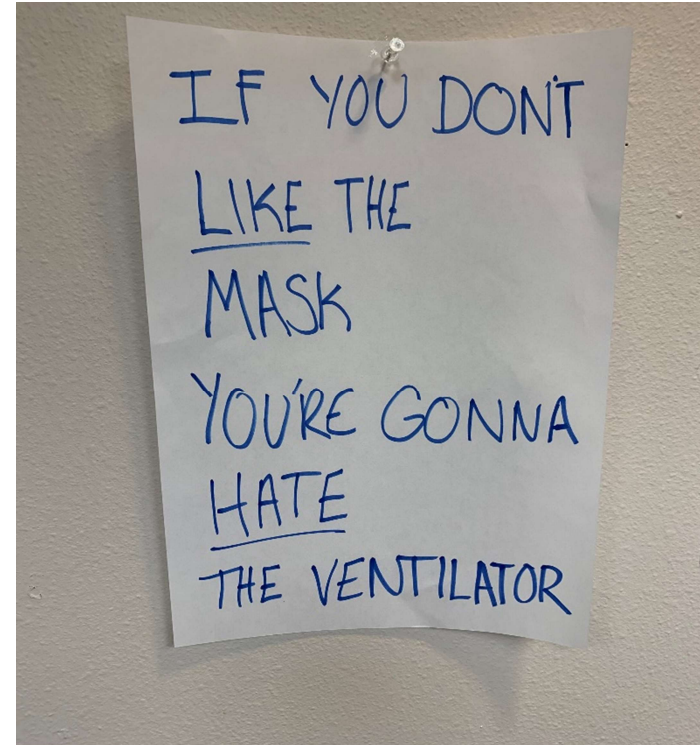
Response to COVID-19 outbreak at pork processing facility

- Texas County, OK had the 8th highest COVID-19 cases per capita in U.S.
- CDC rapid response team deployed to help mitigate outbreak in a major meat processor, the adjacent community and tri-state region.





CDC's Scott Sudweeks and Kristine Lindell, reviewing clusters of COVID-19 cases in Guymon, OK.

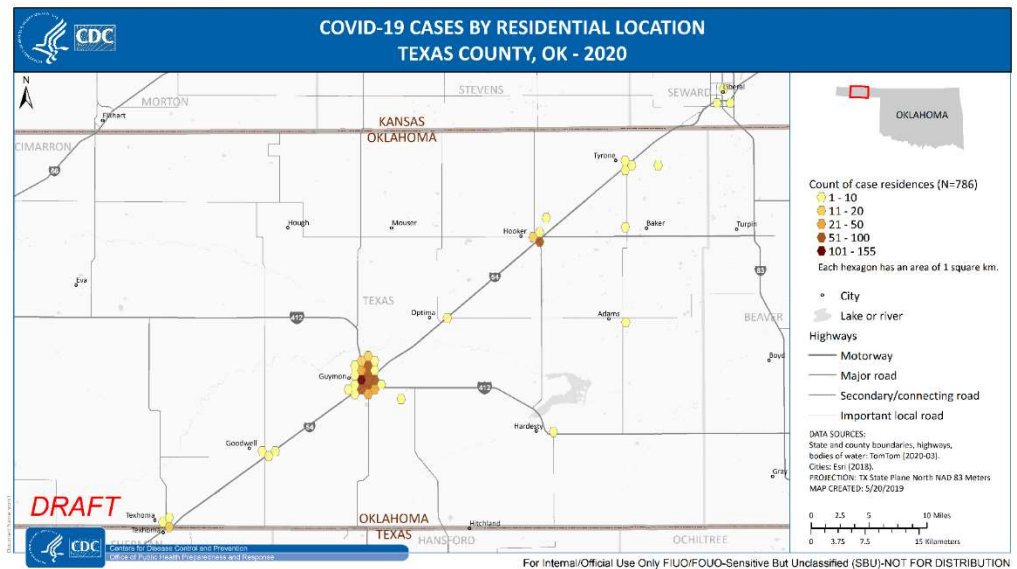


Brainstorming health communication messages.



Response to COVID-19 outbreak at pork processing facility

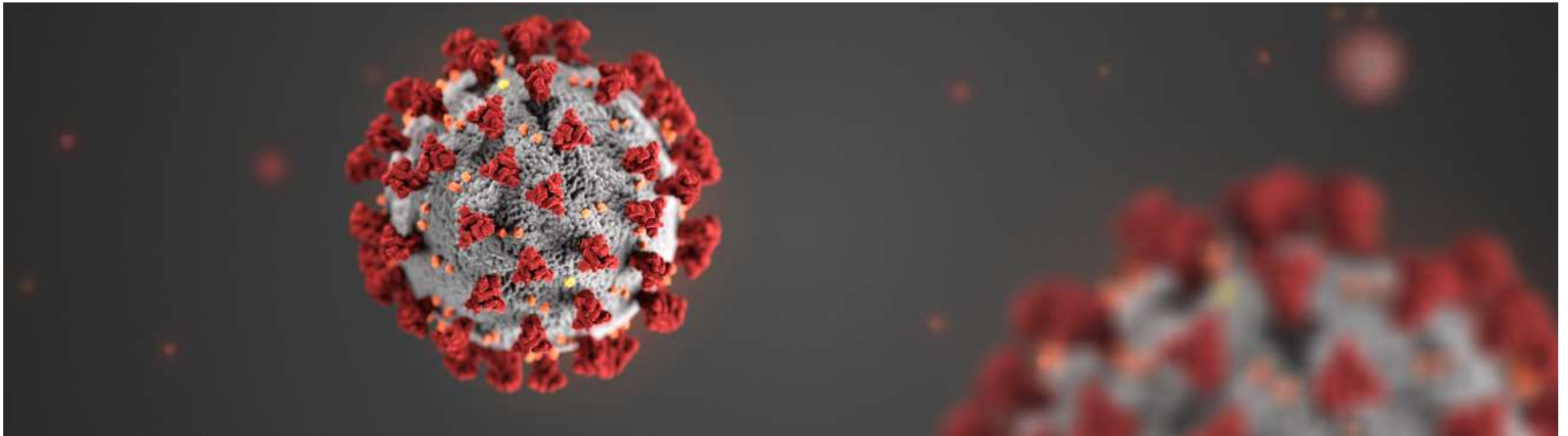
- Targeted health communication campaign geared toward specific community segments.
- Coordinated surveillance data collection and analysis
- Provided actionable recommendations to sustain mitigation and coordinate ongoing response at state, county and local level.



Closing Remarks

Chris Poulet, Region 8 Representative, Office of Community Health and Hazard Assessment





For more information, contact CDC
1-800-CDC-INFO (232-4636)
TTY: 1-888-232-6348 www.cdc.gov

The findings and conclusions in this report are those of the authors and do not necessarily represent the official position of the Centers for Disease Control and Prevention.

